

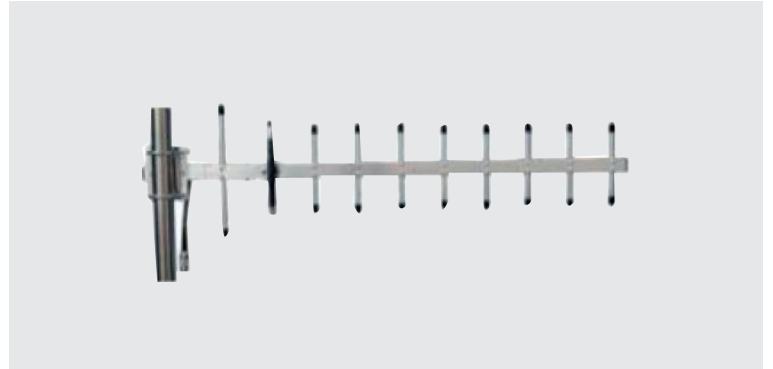
OUTDOOR YAGI ANTENNA

698-869 MHz

BDA-YDA763869-14-1

Product Features

- PS700 & PS800 full band
- High Directivity
- Max Power 100W



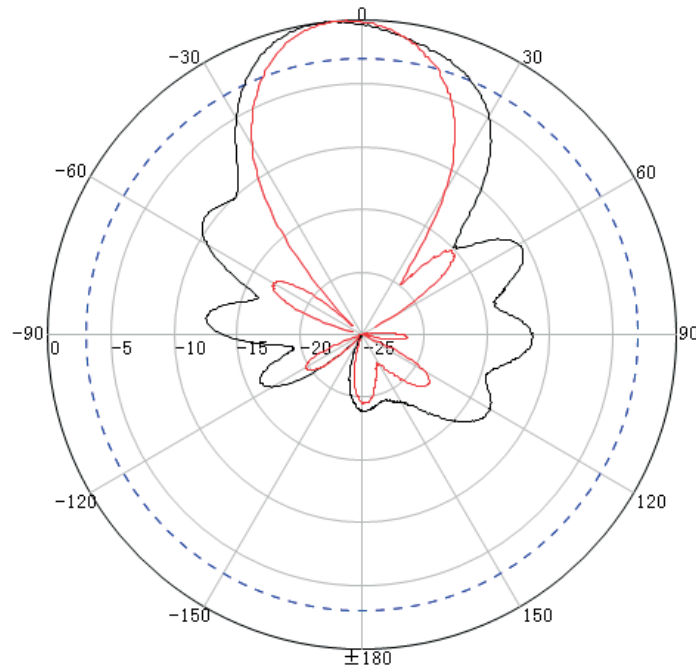
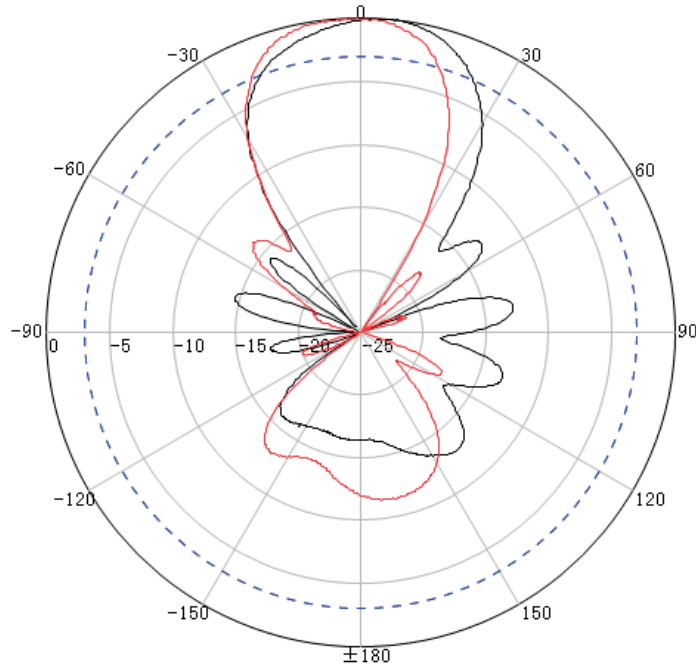
Electrical Specifications	Value
Frequency Range	698-869 MHz
F/B Ratio	> 18 dB
Gain	14 dBi
VSWR	≤1.5
Radiation	Direction
Polarization	Vertical or Horizontal
Horizontal Beamwidth	40°
Vertical Beamwidth	32°
Input Impedance	50 Ω
Max. Input Power	100 W
Lightning Protection	DC Ground
Cable Type	RG58U
Cable Length	30cm
Mount way	Pole
Diameter of Installation Pole	Ø30~Ø50mm

Mechanical Specifications	Value
Connector	N Female
Max wind	130 miles/hour
Dimensions	1100x230x45mm
Weight	0.90 kg
Color	White
Radome Material	Aluminum Alloy
Operating Temperature	-40°C to +65 °C

OUTDOOR YAGI ANTENNA 698-869 MHz

BDA-YDA763869-14-1

Radiating Patterns



DOC HON62098.02 - 03262021 - DMC

Honeywell Business Solutions
715 Peachtree Street NE
Atlanta, GA 30308
www.honeywell.com

HON62098.02 • 03262021
©2020 by Honeywell International Inc. All rights reserved.
Unauthorized use of this document is strictly prohibited.
This document is not intended to be used for installation purposes. We try to keep our product information up-to-date and accurate. We cannot cover all specific applications or anticipate all requirements. All specifications are subject to change without notice.
Country of origin: U.S.A.

**THE
FUTURE
IS
WHAT
WE
MAKE IT**

Honeywell